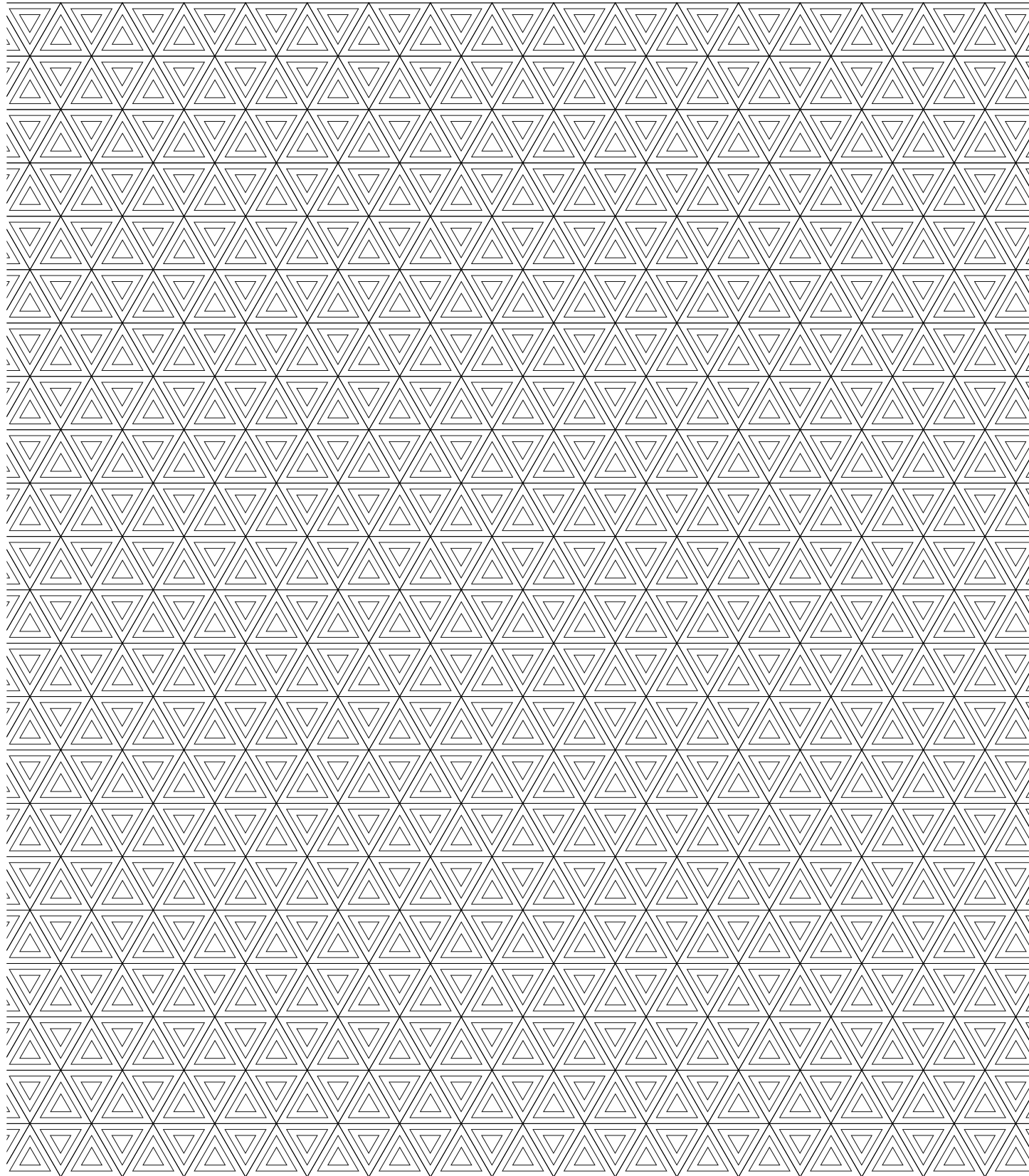
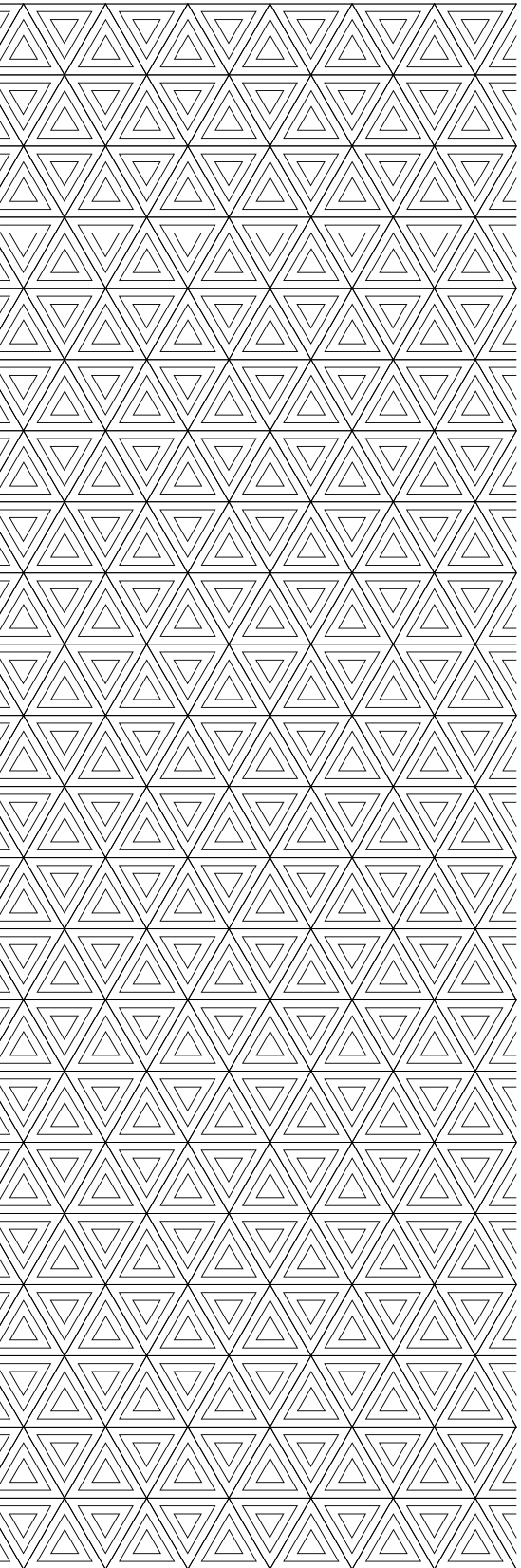


C A T A L O G







CONTENTS .

About Us	3
Our Range	5
Social Responsibility	7
Men	8
T-Shirts	8
Tanks and Sleeveless Tees	16
Longsleeves	18
Shirts and Polos	20
Sweatshirts	22
Jackets	27
Pants and Shorts	28
Women	30
T-Shirts	30
Tanks and Sleeveless Tees	36
Longsleeves	38
Sweatshirts	40
Pants and Shorts	45
Kids and Infants	46
Caps and Hats	48
Bags	52
Colours	55
Fabrics	56
Printability	58
Little Help Project	59
Index	60





ABOUT US.

AS Colour designs and manufactures quality basics. We believe in taking our time with every product we make. We only design and produce premium apparel that will stand the test of time.

AS Colour is guided by three key principles:

Quality is key.

Respect the details.

Keep it simple.

FIT, FABRIC, FINISH & FACTORIES.

What makes AS Colour different? It all starts with F: Fit, Fabric, Finish and Factories.

FIT

Throughout our design and sampling process we scrutinize every dimension and detail. That's how we make sure all of the garments we produce are timeless and always fit like they should.

FABRIC

Our production process begins with sourcing the highest quality yarn. We don't buy pre-made fabric off the open market. We pay attention to the entire textile process so that the end garment holds its shape and is built to last.

FINISH

We keep a close eye on every step in our intensive production process. Because of our close involvement in quality control, we are able to produce garments with a finish recognized as one of the best print faces on the market.

FACTORIES

We work closely with each of our factories providing them with regular production orders and consistent pricing. We require periodic audits to ensure all our factories meet our labor and production standards. This allows our customers to feel assured about how we do business and how our products are made.





OUR RANGE.

T-SHIRTS / TANKS

T-shirts are our first love. Because they are the beginning and the end of our business, we're constantly developing new ideas to push the boundaries of the humble t-shirt. We specialize in the highest quality combed cotton, fashion fits and other innovative fabrics. They're great on their own, but our t-shirts are also renowned as one of the best print surfaces available.

SHIRTS

Our range of shirts covers a timeless oxford long sleeve style and a combed cotton short sleeve polo shirt.

SWEATSHIRTS

We know sweatshirts. That's why our extensive range is now one of the largest on the market. We make pullover hoods, zip hoods and crewneck sweats in a selection of fabric weights in both cotton/poly fleece and French Terry.

JACKETS

Our love of details sees us developing increasingly complex garments. Our outerwear range currently includes a versatile rip-stop windbreaker.

PANTS / SHORTS

Our pants and shorts range covers core chino styles and track pants/shorts, simple in design and constructed in quality materials.

CAPS / HATS

Our headwear range covers both tonal and contrast options. The core baseball snapbacks are a perennial favorite but we've also pushed into a trucker, five panel and a bucket hat.

BAGS

A basic tote bag and cylinder duffel are on offer in our bag range. Both are simple but durable and timeless.





S O C I A L R E S P O N S I B I L I T Y . _____

At AS Colour we recognize our responsibilities to workers for the conditions under which our products are made. We only work with factories that can assure auditable standards of safe, fair, legal and humane working conditions. We work with great people and we care for their well-being, we care how we do business, who we do business with, and how people are treated. Ensuring we and our suppliers act responsibly and provide safe, fair, legal and humane working conditions is extremely important to us. We aim for transparency and traceability at all levels of our supply chain. All suppliers are required to map, track and monitor all locations in all levels of their supply chain and provide transparency information when we request it.

We believe that good workplace standards, decent health and safety requirements, fair pay and conditions, and care for the environment are important elements in business success. We value all of our employees, and set the same high standard for their working conditions as we set for the high quality of our products. We choose to work closely with fewer factories that we know well and all our factories get a regular order every six weeks, giving them certainty around work and income.

Our production standards are certified under our own Code of Conduct as well as by reputable international organizations. The factories we work with are audited by demanding third party inspection teams. If audits show corrective measures are required, we work with the factories and our certification providers to develop a corrective action plan and a time-line for follow-up audits. Through our Code of Conduct, we insist on fair, safe and healthy factory workplace conditions, we insist that factories pay their workers a legal minimum wage or better. Workers may voluntarily accept overtime work with pay at a premium rate, and workers have the right to join a union. We trace our full supply chain, providing transparency throughout. We keep our production policies and Code of Conduct up to date and continually monitor our suppliers.

For information in more detail please visit our website's social responsibility page.



5001/5001B STAPLE TEE.

Regular fit
 Crew neck
 Mid-weight, 5.3 oz/yd², 28-singles
 100% combed cotton (heathers 15% polyester)
 Neck ribbing, side seamed, shoulder to shoulder tape,
 double needle hems, preshrunk to minimize shrinkage
 5001B sizes: 4XL, 5XL

SIZE	SML	MED	LRG	XLG	2XL	3XL	4XL	5XL
Body Width (inches)	18-1/2	20-1/2	22-1/4	24	25-1/4	26-3/4	29-1/2	31-1/2
Body Length (inches)	28	29-1/2	31	32-1/4	33	33-1/2	34-1/4	35-1/4



5010 STAPLE POCKET TEE.

Regular fit
 Crew neck, contrast colour pocket
 Mid-weight, 5.3 oz/yd², 28-singles
 100% combed cotton (heathers 15% polyester)
 Neck ribbing, side seamed, shoulder to shoulder tape,
 double needle hems, preshrunk to minimize shrinkage



Athletic Heather/Black Black/Athletic Heather



SIZE	SML	MED	LRG	XLG	2XL
Body Width (inches)	18-1/2	20-1/2	22-1/4	24	25-1/4
Body Length (inches)	28	29-1/2	31	32-1/4	33

5028 STAPLE STRIPE TEE.

Regular fit
 Crew neck, varied stripe width across colours
 Lightweight, 4.4 oz/yd², 34-singles
 100% combed cotton (heathers 15% polyester)
 Neck ribbing, side seamed, shoulder to shoulder tape,
 double needle hems, preshrunk to minimize shrinkage



Black/White Athletic Heather/Black Navy/White



SIZE	SML	MED	LRG	XLG	2XL
Body Width (inches)	18-1/2	20-1/2	22-1/4	24	25-1/4
Body Length (inches)	28	29-1/2	31	32-1/4	33



5013 TALL TEE.

Regular-Relaxed fit
 Crew neck, extra long body
 Mid-weight, 5.3 oz/yd², 26-singles
 100% combed cotton (heathers 15% polyester)
 Neck ribbing, side seamed, shoulder to shoulder tape,
 double needle hems, preshrunk to minimize shrinkage



White



Burgundy



Navy



Athletic Heather



Asphalt Heather



Black

SIZE	SML	MED	LRG	XLG	2XL
Body Width (inches)	18-3/4	20-1/2	22-1/4	24	25-3/4
Body Length (inches)	32	33-1/2	34-3/4	36-3/4	37



5002 PAPER TEE.

Slim fit
 Crew neck
 Lightweight, 4.4 oz/yd², 30-singles
 100% combed cotton (heathers 15% polyester)
 Neck ribbing, side seamed, shoulder to shoulder tape,
 double needle hems, preshrunk to minimize shrinkage

SIZE	SML	MED	LRG	XLG	2XL
Body Width (inches)	18-1/2	20	21-3/4	23-1/4	24-3/4
Body Length (inches)	28-1/4	29-1/4	30-1/4	31-3/4	33



5005 ORGANIC TEE.



Slim-Regular fit
 Crew neck
 Lightweight, 4.4 oz/yd², 34-singles
 100% organic combed cotton
 Quality cotton grown without the use of herbicides or pesticides
 Neck ribbing, side seamed, shoulder to shoulder tape,
 double needle hems, preshrunk to minimize shrinkage



White



Natural



Navy



Black

SIZE	SML	MED	LRG	XLG	2XL
Body Width (inches)	18	19-3/4	21-1/4	23	24-3/4
Body Length (inches)	28	29	30-1/4	31	32



5006 MARBLE TEE.

Slim fit
 Crew neck, heathered fabric with a washed out look
 Lightweight, 4.4 oz/yd², 34-singles
 65% cotton 35% polyester
 Neck ribbing, side seamed, shoulder to shoulder tape,
 double needle hems, preshrunk to minimize shrinkage



Oatmeal Heather



Hibiscus Heather



Ocean Heather



Navy Heather



Steel Heather



Asphalt Heather

SIZE	SML	MED	LRG	XLG	2XL
Body Width (inches)	18-1/2	20	21-3/4	23-1/4	24-3/4
Body Length (inches)	28-1/4	29-1/4	30-1/4	32	33



White



Burgundy



Navy



Athletic Heather



Black

5026 CLASSIC TEE.

Relaxed fit
 Crew neck
 Heavyweight, 6.5 oz/yd², 22-singles
 100% combed cotton (heathers 15% polyester)
 Neck ribbing, side seamed, shoulder to shoulder tape,
 double needle hems, preshrunk to minimize shrinkage

SIZE	SML	MED	LRG	XLG	2XL	3XL
Body Width (inches)	18-1/2	20-1/2	22-1/4	24	25-1/4	26-3/4
Body Length (inches)	27-1/2	29	30-1/4	32	33-3/4	34-1/4



5003 TARMAC V-NECK TEE.

Slim fit
 V-neck
 Lightweight, 4.4 oz/yd², 34-singles
 100% combed cotton (heathers 15% polyester)
 Neck ribbing, side seamed, shoulder to shoulder tape,
 double needle hems, preshrunk to minimize shrinkage



White



Athletic Heather



Black

SIZE	SML	MED	LRG	XLG	2XL
Body Width (inches)	17-3/4	19-1/4	21	22-1/2	24-1/2
Body Length (inches)	28	29	30-1/4	31	32



5024 WIRE STRIPE TEE.

Regular-Relaxed fit
 Scoop neck, longer body, thin stripe
 Lightweight, 4.4 oz/yd², 34-singles
 100% combed cotton
 Self-fabric binding on neck, side seamed, double needle hems,
 preshrunk to minimize shrinkage



White/Olive



White/Navy

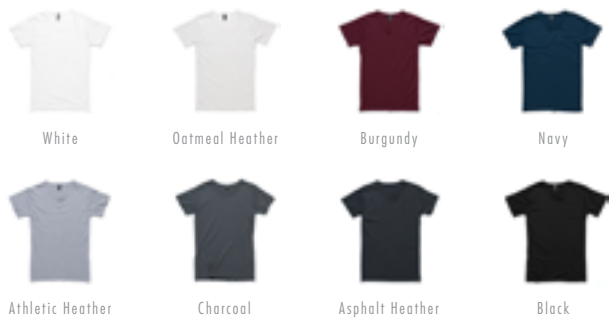


Natural/Black



Black/Natural

SIZE	SML	MED	LRG	XLG	2XL
Body Width (inches)	19	20-1/4	21-3/4	23	24-1/2
Body Length (inches)	30	31	31-3/4	32-1/2	33-1/4



5011 SHADOW TEE.

Regular-Relaxed fit
 Scoop neck, longer body
 Lightweight, 4.4 oz/yd², 34-singles
 100% combed cotton (heathers 15% polyester)
 Self-fabric binding on neck, side seamed, double needle hems,
 preshrunk to minimize shrinkage

SIZE	SML	MED	LRG	XLG	2XL
Body Width (inches)	19	20-1/4	21-3/4	23	24-1/2
Body Length (inches)	30	31	31-3/4	32-3/4	33-1/2



5025 BARNARD SLEEVELESS TEE.

Regular fit
 Sleeveless tee, raw armhole edges
 Lightweight, 4.4 oz/yd², 34-singles
 100% combed cotton (heathers 15% polyester)
 Neck ribbing, double needle bottom hem,
 preshrunk to minimize shrinkage

Please note unisex products are in men's sizes



White



Athletic Heather



Navy



Cool



Black

SIZE	XSM	SML	MED	LRG	XLG	2XL
Body Width (inches)	17-3/4	19	20	21-1/4	22-1/2	23-3/4
Body Length (inches)	27-1/4	28-1/4	29-1/2	30-3/4	32	33



5021 TYPO TANK.

Relaxed fit
 Split detail at sides, slight drop at back
 Lightweight, 4.4 oz/yd², 34-singles
 100% combed cotton (heathers 15% polyester)
 Self-fabric bindings, double needle bottom hem,
 preshrunk to minimize shrinkage



White



Athletic Heather



Black

SIZE	SML	MED	LRG	XLG	2XL
Body Width (inches)	18	19-1/4	20-1/2	21-3/4	23
Body Length (inches)	30	31	32	33	33-3/4



White



Athletic Heather



Red



Navy



Charcoal



Asphalt Heather



Black

5007 LOWDOWN TANK.

Regular fit
 Regular tank shape
 Lightweight, 4.4 oz/yd², 34-singles
 100% combed cotton (heathers 15% polyester)
 Self-fabric bindings, double needle bottom hem,
 preshrunk to minimize shrinkage

SIZE	SML	MED	LRG	XLG	2XL
Body Width (inches)	18	19-1/4	20-1/2	21-3/4	23
Body Length (inches)	29	30-1/4	31-1/2	32-3/4	33-3/4



5012 RAGLAN TEE.

Regular fit
 Crew neck, ¾ length raglan sleeves, curved tails
 Lightweight, 4.4 oz/yd², 34-singles
 100% combed cotton (heathers 15% polyester)
 Self-fabric binding on neck, side seamed, double needle hems,
 preshrunk to minimize shrinkage



White/Kel. Green



White/Navy



White/Black



Ath. H./Burg.



Ath. H./Asp. H.



Black/White



Arc. H./Navy

SIZE	SML	MED	LRG	XLG	2XL
Body Width (inches)	19	20-3/4	22-1/4	23-3/4	25-1/2
Body Length (inches)	29-1/2	30-3/4	32	33	33-1/2



5009 INK LONGSLEEVE TEE.

Slim-Regular fit
 Crew neck
 Mid-weight, 5.3 oz/yd², 26-singles
 100% combed cotton (heathers 15% polyester)
 Neck ribbing, side seamed, shoulder to shoulder tape,
 double needle hems, preshrunk to minimize shrinkage



White



Athletic Heather



Charcoal



Black

SIZE	SML	MED	LRG	XLG	2XL
Body Width (inches)	17-3/4	19-1/4	21	22-1/2	24
Body Length (inches)	28-1/4	29	30	30-3/4	31-1/2



White



Athletic Heather



Navy



Black

5029 BASE LONGSLEEVE TEE.

Relaxed fit
 Crew neck, longer body, cuffed sleeves, split detail at sides, slight drop at back
 Heavyweight, 5.9 oz/yd², 20-singles
 100% carded cotton (heathers 15% polyester)
 Neck ribbing, side seamed, shoulder to shoulder tape, double needle hems, preshrunk to minimize shrinkage

SIZE	SML	MED	LRG	XLG	2XL
Body Width (inches)	19	20-1/2	22	23-3/4	25-1/4
Body Length (inches)	29	30	30-3/4	31-1/2	32-1/4



5402 CHAD POLO.

Regular fit
 Short sleeve collared polo shirt, 3 button placket, tonal buttons, split detail at sides
 Heavyweight, 6.5 oz/yd², 20-singles
 100% combed cotton (heathers 15% polyester)
 Side seamed, double needle hems, preshrunk to minimize shrinkage



White



Athletic Heather



Navy



Black

SIZE	SML	MED	LRG	XLG	2XL
Body Width (inches)	18-1/2	20	21-1/4	22-3/4	24
Body Length (inches)	29	30	30-3/4	31-1/2	32-1/4



White



Light Blue



Black

5401 OXFORD SHIRT.

Regular fit
 Long sleeve button up shirt, button-down collar, chest pocket,
 clear buttons, adjustable cuffs
 Mid-weight, 4.7 oz/yd²
 100% woven cotton
 Side seamed, back yoke, preshrunk to minimize shrinkage

SIZE	SML	MED	LRG	XLG	2XL
Body Width (inches)	21	21-3/4	23	23-3/4	24-3/4
Body Length (inches)	30	30-3/4	31-1/2	32-1/4	33



5106 BRUSH CREW.

Slim fit
 Crew sweat, raglan sleeves
 Lightweight, 7.7 oz/yd²
 75% cotton 25% polyester (non-heathers 100% cotton),
 anti-pill French Terry fleece
 Yoke insert for back printing, neck and sleeve cuff ribbing,
 rib insert and stitching detail at neck, preshrunk to minimize shrinkage

Please note unisex products are in men's sizes



Athletic Heather



Navy Heather



Asphalt Heather



Black

SIZE	XSM	SML	MED	LRG	XLG	2XL
Body Width (inches)	19-1/4	20-1/2	21	22-1/2	23-1/4	24-1/2
Body Length (inches)	28	29	30	31	32	33



Athletic Heather



Navy



Asphalt Heather



Black

5104 BOX CREW.

Regular fit
 Crew sweat, raglan sleeves
 Heavyweight, 10.3 oz/yd²
 80% cotton 20% polyester anti-pill fleece
 Neck and sleeve cuff ribbing, preshrunk to minimize shrinkage

Please note unisex products are in men's sizes

SIZE	XXS	XSM	SML	MED	LRG	XLG	2XL	3XL
Body Width (inches)	18	19-1/4	20-1/2	21-3/4	23	24	24-1/2	26-1/4
Body Length (inches)	26-3/4	28	29	30	31	32	33	33-3/4



5202 CHALK HOOD.

Regular fit
 Pullover hood, raglan sleeves, kangaroo pocket
 Light-Mid weight, 7.7 oz/yd²
 65% cotton 35% polyester anti-pill fleece
 Lined hood, tonal drawcord, sleeve cuff ribbing,
 preshrunk to minimize shrinkage
 Price-point

Please note unisex products are in men's sizes



Athletic Heather



Navy



Black

SIZE	XSM	SML	MED	LRG	XLG	2XL	3XL
Body Width (inches)	19-1/4	20-1/2	21-3/4	23	24	25-1/4	26-1/4
Body Length (inches)	27-1/4	28-1/4	29-1/4	30-1/4	31-1/2	32-1/4	33-1/4



Athletic Heather



Navy



Asphalt Heather



Black

5102 STENCIL HOOD.

Regular fit
 Pullover hood, inset sleeves, kangaroo pocket
 Heavyweight, 10.3 oz/yd²
 80% cotton 20% polyester anti-pill fleece
 Lined hood, tonal shoestring drawcord, sleeve cuff ribbing,
 preshrunk to minimize shrinkage

Please note unisex products are in men's sizes

SIZE	XXS	XSM	SML	MED	LRG	XLG	2XL	3XL
Body Width (inches)	18	19-1/4	20-1/2	21-3/4	22-3/4	24	25-1/4	26-1/4
Body Length (inches)	26-1/4	27-1/4	28-1/4	29-1/4	30-1/4	31-1/4	32-1/4	33-1/4



5204 INDEX ZIP HOOD.

Regular fit
 Zip hood, inset sleeves, kangaroo pocket
 Heavyweight, 10.3 oz/yd²
 80% cotton 20% polyester anti-pill fleece
 Lined hood, metal tipped shoestring drawcord, metal zip,
 sleeve cuff ribbing, preshrunk to minimize shrinkage

Please note unisex products are in men's sizes



Athletic Heather



Navy



Asphalt Heather



Black

SIZE	XXS	XSM	SML	MED	LRG	XLG	2XL	3XL
Body Width (inches)	17-3/4	19	20	21-1/4	22-1/2	23-3/4	24-3/4	26
Body Length (inches)	26-1/4	26-3/4	28	29	30	31	32	33

5107 TRACTION ZIP HOOD.

Slim fit

Zip hood, raglan sleeves, kangaroo pocket

Mid-weight, 9.4 oz/yd²

75% cotton 25% polyester (non-heathers 100% cotton),
anti-pill French Terry fleece

Lined hood, white drawcord, white metal zip, sleeve cuff ribbing,
preshrunk to minimize shrinkage

Please note unisex products are in men's sizes



Steel Heather



Navy Heather



Asphalt Heather



Black

SIZE	XXS	XSM	SML	MED	LRG	XLG	2XL
Body Width (inches)	17-3/4	18-1/2	20	21-1/4	22-1/2	23-3/4	24-3/4
Body Length (inches)	26	26-3/4	28-1/4	29-1/4	30-1/4	31-3/4	32-1/4



5501 CYRUS WINDBREAKER.

Regular fit

Pullover zip-up hooded windbreaker, packable, rubber headphone
patch, adjustable elastic drawcord at hem, 2 side pockets

Lightweight, 2.7 oz/yd²

100% polyester rip-stop

Water resistant, SPF 40, double sided puller on front pouch zip,
metal tipped tonal drawcord



Black

SIZE	SML	MED	LRG	XLG	2XL
Body Width (inches)	21-1/4	22-1/2	23-3/4	24-3/4	26
Body Length (inches)	29-1/4	30-1/4	31	32-1/4	33-1/4





5901 STANDARD PANT.

Slim-Regular fit
 China pants, 2 side pockets, welt pockets at back
 Mid-weight, 7.4 oz/yd²
 96% cotton 4% spandex
 Belt loops on waist, button closure, metal YKK zip fly, preshrunk to minimize shrinkage



Khaki



Army



Navy



Black

SIZE	28	30	32	34	36	38	40
------	----	----	----	----	----	----	----



5904 TRACK PANT.

Regular fit
 Sweat pants, 2 side pockets, slight drop at crotch, cuffed legs
 Mid-weight, 9.4 oz/yd²
 75% cotton 25% polyester (non-heathers 100% cotton), anti-pill French Terry fleece
 Elastic waistband, white external drawcord, stitching detail around pockets, preshrunk to minimize shrinkage



Athletic Heather



Asphalt Heather



Black

SIZE	SML	MED	LRG	XLG	2XL
Waist (inches)	26-3/4	28-3/4	30-3/4	32-3/4	34-3/4
Outseam (inches)	44	44-3/4	45-3/4	46-1/2	47-1/4

5902 PLAIN SHORT.

Slim-Regular fit
 Chino shorts, 2 side pockets, welt pockets at back
 Mid-weight, 7.4 oz/yd²
 96% cotton 4% spandex
 Belt loops on waist, button closure, metal YKK zip fly,
 preshrunk to minimize shrinkage



Khaki



Army



Navy



Black

SIZE	28	30	32	34	36	38	40
------	----	----	----	----	----	----	----



5905 TRACK SHORT.

Regular fit
 Sweat shorts, 2 side and 1 back pocket, raw edges
 Mid-weight, 9.4 oz/yd²
 82% cotton 18% polyester anti-pill French Terry fleece
 Elastic waistband, white external drawcord, stitching detail around
 pockets, preshrunk to minimize shrinkage



Steel Heather



Black Heather

SIZE	SML	MED	LRG	XLG	2XL
Waist (inches)	28-3/4	30-3/4	32-3/4	34-3/4	36-1/2
Outseam (inches)	19	19-1/4	19-3/4	20	20-1/2





4002 WAFER TEE.

Slim fit
 Crew neck
 Lightweight, 4.4 oz/yd², 30-singles
 100% combed cotton (heathers 15% polyester)
 Neck ribbing, side seamed, shoulder to shoulder tape,
 double needle hems, preshrunk to minimize shrinkage

SIZE	XSM	SML	MED	LRG	XLG	2XL
Body Width (inches)	16-1/4	17-1/2	18-1/4	19-1/4	21	22-1/4
Body Length (inches)	26	27	27-1/2	27-3/4	28	28-1/2





White



Oatmeal Heather



Athletic Heather



Navy



Army



Burgundy



Coal



Black

4008 MALI TEE.

Regular fit
 Scoop neck, capped sleeves, curved tails
 Lightweight, 4.4 oz/yd², 34-singles
 100% combed cotton (heathers 15% polyester)
 Self-fabric binding on neck, side seamed, double needle hems,
 preshrunk to minimize shrinkage

SIZE	XSM	SML	MED	LRG	XLG
Body Width (inches)	17	17-3/4	19	19-3/4	21
Body Length (inches)	27-1/2	28	28-3/4	29-3/4	30-1/2



4011 SHUTTER TEE.

Relaxed fit
 Wider scoop neck, longer body
 Lightweight, 4.1 oz/yd², 30-singles
 50% cotton 50% modal
 Self-fabric binding on neck, side seamed, double needle hems,
 preshrunk to minimize shrinkage



White



Athletic Heather



Navy



Black

SIZE	XSM	SML	MED	LRG	XLG
Body Width (inches)	17-1/2	18-1/4	19-1/4	20-1/4	21-1/4
Body Length (inches)	27-1/2	28-1/4	29	30	30-3/4



4019 NOTE TEE.

Slim-Regular fit
 Scoop neck, capped sleeves
 Lightweight, 4.1 oz/yd², 30-singles
 100% modal
 Self-fabric binding on neck and sleeves, side seamed,
 preshrunk to minimize shrinkage



White



Steel Heather



Burgundy



Black

SIZE	XSM	SML	MED	LRG
Body Width (inches)	16-1/2	17-3/4	18-1/2	19-3/4
Body Length (inches)	26	26-3/4	28	28-3/4



White



Athletic Heather



Black

4010 BEVEL V-NECK TEE.

Regular fit
 V-neck, capped sleeves
 Lightweight, 4.4 oz/yd², 34-singles
 100% combed cotton (heathers 15% polyester)
 Self-fabric binding on neck, side seamed, double needle hems,
 preshrunk to minimize shrinkage

SIZE	XSM	SML	MED	LRG	XLG
Body Width (inches)	17	17-3/4	19	19-3/4	21
Body Length (inches)	26-3/4	27-1/2	28-1/4	29	30



4024 BASIC TEE.

Regular fit
 Crew neck, fine breathable fabric
 Lightweight, 3.8 oz/yd², 30-singles
 85% viscose 15% linen
 Neck ribbing, side seamed, shoulder to shoulder tape,
 double needle hems, preshrunk to minimize shrinkage



White



Black

SIZE	XSM	SML	MED	LRG	XLG
Body Width (inches)	16-1/2	17-1/2	18-1/2	19-1/2	20-1/2
Body Length (inches)	25-1/2	26-1/4	27-1/4	28	28-3/4



4025 BASIC STRIPE TEE.

Regular fit
 Crew neck, fine breathable fabric, varied stripe width across colours
 Lightweight, 3.8 oz/yd², 30-singles
 85% viscose 15% linen
 Neck ribbing, side seamed, shoulder to shoulder tape,
 double needle hems, preshrunk to minimize shrinkage



Navy/White



Black/White

SIZE	XSM	SML	MED	LRG	XLG
Body Width (inches)	16-1/2	17-1/2	18-1/2	19-1/4	20-1/2
Body Length (inches)	25-1/2	26-1/4	27-1/4	28	28-3/4



Natural/Black



White/Navy

4023 LOOP STRIPE TEE.

Regular fit
 Crew neck, capped sleeves
 Lightweight, 4.4 oz/yd², 34-singles
 100% combed cotton
 Neck ribbing, side seamed, shoulder to shoulder tape,
 preshrunk to minimize shrinkage

SIZE	XSM	SML	MED	LRG	XLG
Body Width (inches)	16-1/2	17-3/4	18-1/2	19-3/4	20-1/2
Body Length (inches)	26	26-3/4	28	28-3/4	29-1/2



5025 BARNARD SLEEVELESS TEE.

Regular fit
 Sleeveless tee, raw armhole edges
 Lightweight, 4.4 oz/yd², 34-singles
 100% combed cotton (heathers 15% polyester)
 Neck ribbing, double needle bottom hem,
 preshrunk to minimize shrinkage

Please note unisex products are in men's sizes



White



Athletic Heather



Navy



Coal



Black

SIZE	XSM	SML	MED	LRG	XLG	2XL
Body Width (inches)	17-3/4	19	20	21-1/4	22-1/2	23-3/4
Body Length (inches)	27-1/4	28-1/4	29-1/2	30-3/4	32	33



4021 EVEN RIB TANK.

Slim-Regular fit
 Regular tank shape
 Mid-weight, 5.6 oz/yd², 30-singles
 100% cotton (heathers 15% polyester)
 1x1 superfine printable rib, self-fabric bindings,
 double needle bottom hem, preshrunk to minimize shrinkage



White



Athletic Heather



Black

SIZE	XSM	SML	MED	LRG	XLG
Body Width (inches)	12-3/4	13-3/4	14-3/4	15-3/4	16-1/2
Body Length (inches)	27	28	28-3/4	30	30-3/4

4007 DASH RACERBACK TANK.

Regular-Relaxed fit
 Racerback, panel detail at back, curved tails
 Lightweight, 4.1 oz/yd², 30-singles
 50% cotton 50% modal
 Self-fabric bindings, double needle bottom hem,
 preshrunk to minimize shrinkage



White



Athletic Heather



Black

SIZE	XSM	SML	MED	LRG	XLG
Body Width (inches)	15	16	17-1/2	18-1/2	19-3/4
Body Length (inches)	28-1/4	29	30	30-3/4	31-1/2



4040 TULIP TANK.

Regular fit
 Regular tank shape
 Lightweight, 4.4 oz/yd², 34-singles
 100% combed cotton (heathers 15% polyester)
 Self-fabric bindings, double needle bottom hem,
 preshrunk to minimize shrinkage



White



Athletic Heather



Red



Asphalt Heather



Black

SIZE	XSM	SML	MED	LRG	XLG
Body Width (inches)	17-1/2	18-1/4	19-1/4	20-1/4	21-1/4
Body Length (inches)	27-1/2	28-1/4	29	30	30-3/4





4026 FINE LONGSLEEVE TEE.

Regular fit
 Crew neck, fine breathable fabric
 Lightweight, 3.8 oz/yd², 30-singles
 85% viscose 15% linen
 Neck ribbing, side seamed, shoulder to shoulder tape,
 double needle hems, preshrunk to minimize shrinkage



White



Black

SIZE	XSM	SML	MED	LRG	XLG
Body Width (inches)	16	17	18	19	20
Body Length (inches)	26	26-1/4	27-1/4	27-3/4	28-1/4



4027 FINE STRIPE LONGSLEEVE TEE.

Regular fit
 Crew neck, fine breathable fabric, varied stripe width across colours
 Lightweight, 3.8 oz/yd², 30-singles
 85% viscose 15% linen
 Neck ribbing, side seamed, shoulder to shoulder tape,
 double needle hems, preshrunk to minimize shrinkage



Navy/White



Black/White

SIZE	XSM	SML	MED	LRG	XLG
Body Width (inches)	16	17	18	19	20
Body Length (inches)	26	26-1/4	27-1/4	27-3/4	28-1/4



White



Athletic Heather



Navy



Black

4017 STELLA LONGSLEEVE TEE.

Regular-Relaxed fit

Wider scoop neck, longer body, split detail at sides, slight drop at back

Lightweight, 4.1 oz/yd², 30-singles

50% cotton 50% modal

Self-fabric binding on neck, side seamed, preshrunk to minimize shrinkage

SIZE	XSM	SML	MED	LRG	XLG
Body Width (inches)	17	18	19	20	21
Body Length (inches)	25-1/4	25-1/2	26-1/4	27	27-1/2



4016 SLOUCH CREW.

Regular-Relaxed fit
 Scoop neck, heathered fabric with a washed out look
 Light-Mid weight, 4.7 oz/yd², 28-singles
 100% cotton nature yarn
 Raglan sleeves, waistband, cuffed sleeves
 Self-fabric neck binding, waist and sleeve cuffs, side seamed,
 preshrunk to minimize shrinkage



Burgundy Heather



Light Blue Heather



Navy Heather



Athletic Heather



Asphalt Heather

SIZE	XSM	SML	MED	LRG	XLG
Body Width (inches)	18-1/2	19-3/4	21	22	23-1/4
Body Length (inches)	25-1/4	26	26-3/4	27-1/2	28-1/4

5106 BRUSH CREW.

Slim fit
 Crew sweat, raglan sleeves
 Lightweight, 7.7 oz/yd²
 75% cotton 25% polyester (non-heathers 100% cotton),
 anti-pill French Terry fleece
 Yoke insert for back printing, neck and sleeve cuff ribbing,
 rib insert and stitching detail at neck, preshrunk to minimize shrinkage

Please note unisex products are in men's sizes



Athletic Heather



Navy Heather



Asphalt Heather



Black

SIZE	XSM	SML	MED	LRG	XLG	2XL
Body Width (inches)	19-1/4	20-1/2	21	22-1/2	23-1/4	24-1/2
Body Length (inches)	28	29	30	31	32	33



5104 BOX CREW.

Regular fit
 Crew sweat, raglan sleeves
 Heavyweight, 10.3 oz/yd²
 80% cotton 20% polyester anti-pill fleece
 Neck and sleeve cuff ribbing, preshrunk to minimize shrinkage

Please note unisex products are in men's sizes



Athletic Heather



Navy



Asphalt Heather



Black

SIZE	XXS	XSM	SML	MED	LRG	XLG	2XL	3XL
Body Width (inches)	18	19-1/4	20-1/2	21-3/4	23	24	24-1/2	26-1/4
Body Length (inches)	26-3/4	28	29	30	31	32	33	33-3/4





5102 STENCIL HOOD.

Regular fit
 Pullover hood, inset sleeves, kangaroo pocket
 Heavyweight, 10.3 oz/yd²
 80% cotton 20% polyester anti-pill fleece
 Lined hood, tonal shoestring drawcord, sleeve cuff ribbing,
 preshrunk to minimize shrinkage

Please note unisex products are in men's sizes



Athletic Heather



Navy



Asphalt Heather



Black

SIZE	XXS	XSM	SML	MED	LRG	XLG	2XL	3XL
Body Width (inches)	18	19-1/4	20-1/2	21-3/4	22-3/4	24	25-1/4	26-1/4
Body Length (inches)	26-1/4	27-1/4	28-1/4	29-1/4	30-1/4	31-1/4	32-1/4	33-1/4

5202 CHALK HOOD.

Regular fit
 Pullover hood, raglan sleeves, kangaroo pocket
 Light-Mid weight, 7.7 oz/yd²
 65% cotton 35% polyester anti-pill fleece
 Lined hood, tonal drawcord, sleeve cuff ribbing,
 preshrunk to minimize shrinkage
 Price-point

Please note unisex products are in men's sizes



Athletic Heather



Navy



Black

SIZE	XSM	SML	MED	LRG	XLG	2XL	3XL
Body Width (inches)	19-1/4	20-1/2	21-3/4	23	24	25-1/4	26-1/4
Body Length (inches)	27-1/4	28-1/4	29-1/4	30-1/4	31-1/2	32-1/4	33-1/4



5204 INDEX ZIP HOOD.

Regular fit
 Zip hood, inset sleeves, kangaroo pocket
 Heavyweight, 10.3 oz/yd²
 80% cotton 20% polyester anti-pill fleece
 Lined hood, metal tipped shoestring drawcord, metal zip,
 sleeve cuff ribbing, preshrunk to minimize shrinkage

Please note unisex products are in men's sizes



Athletic Heather



Navy



Asphalt Heather



Black

SIZE	XXS	XSM	SML	MED	LRG	XLG	2XL	3XL
Body Width (inches)	17-3/4	19	20	21-1/4	22-1/2	23-3/4	24-3/4	26
Body Length (inches)	26-1/4	26-3/4	28	29	30	31	32	33





5107 TRACTION ZIP HOOD.

Slim fit
 Zip hood, raglan sleeves, kangaroo pocket
 Mid-weight, 9.4 oz/yd²
 75% cotton 25% polyester (non-heathers 100% cotton),
 anti-pill French Terry fleece
 Lined hood, white drawcord, white metal zip, sleeve cuff ribbing,
 preshrunk to minimize shrinkage

Please note unisex products are in men's sizes



Steel Heather



Navy Heather



Asphalt Heather



Black

SIZE	XXS	XSM	SML	MED	LRG	XLG	2XL
Body Width (inches)	17-3/4	18-1/2	20	21-1/4	22-1/2	23-3/4	24-3/4
Body Length (inches)	26	26-3/4	28-1/4	29-1/4	30-1/4	31-3/4	32-1/4

4029 MADISON PANT.

Regular fit
 2 side pockets, double sided fabric with internal stripe pattern
 Lightweight, 4.1 oz/yd²
 100% peached cotton
 Elastic waistband, off-white metal tipped external drawcord



Steel



Black

SIZE	XSM	SML	MED	LRG
Waist (inches)	23-1/2	25-1/2	27-1/2	29-1/2
Outseam (inches)	39-3/4	40-1/4	40-1/2	41



4030 MADISON SHORT.

Regular fit
 2 side and 1 back pocket, double sided fabric with internal stripe pattern
 Lightweight, 4.1 oz/yd²
 100% peached cotton
 Elastic waistband, off-white metal tipped external drawcord



Steel



Black

SIZE	XSM	SML	MED	LRG
Waist (inches)	23-1/2	25-1/2	27-1/2	29-1/2
Outseam (inches)	13	13-1/2	13-3/4	14-1/4





3001 WEE TEE.

Regular fit
 Crew neck
 Mid-weight, 5.6 oz/yd², 30-singles
 100% cotton rib (heathers 15% polyester)
 Tonal shoulder domes, 1x1 superfine printable rib
 Self-fabric neck binding, double needle hems,
 preshrunk to minimize shrinkage



SIZE	0-3M	3-6M	6-12M	12-18M	18-24M
Body Width (inches)	8-3/4	9	9-1/4	9-3/4	10
Body Length (inches)	11-1/4	12	12-3/4	13-1/2	14-1/4



3003 MINI-ME ONE-PIECE.

Regular fit
 One-piece
 Mid-weight, 5.6 oz/yd², 30-singles
 100% cotton rib (heathers 15% polyester)
 Tonal shoulder domes, 1x1 superfine printable rib
 Self-fabric bindings, preshrunk to minimize shrinkage



SIZE	0-3M	3-6M	6-12M	12-18M	18-24M
Body Width (inches)	7-1/2	8	8-3/4	9-1/4	9-3/4
Body Length (inches)	14-1/4	15-1/2	16-1/2	17-3/4	19



3005/3006 KIDS & YOUTH TEE.

Regular fit
 Crew neck
 Mid-weight, 5.3 oz/yd², 28-singles
 100% combed cotton (heathers 15% polyester)
 Neck ribbing, side seamed, shoulder to shoulder tape,
 double needle hems, preshrunk to minimize shrinkage

3005 Kids sizes: 2, 4, 6
 3006 Youth sizes: 8, 10, 12, 14, 16

SIZE	2	4	6	8	10	12	14	16
Body Width (inches)	12-1/4	13-1/2	14-1/2	15-1/2	16-1/2	17-1/2	18-1/2	19-1/4
Body Length (inches)	16-1/2	18	19-3/4	21-1/4	23	24-1/2	26	27-1/2



1101 TRIM SNAPBACK CAP.

High profile snapback cap
 Adjustable plastic fastener, eyelets, green under-bill lining
 Mid-weight
 80% acrylic 20% wool
 One size fits all



Light Grey



Burgundy



Navy



Army



Dark Grey



Black

SIZE

ONE SIZE

Circumference (inches)

22-1/2

Height (inches)

4-3/4



1109 BILLY CAP.

Lower-profile snapback cap
 Adjustable plastic fastener, eyelets, tonal under-bill lining,
 seam free front panel
 Mid-weight
 100% cotton
 One size fits all



Khaki



Army



Dark Grey



Navy



Black

SIZE

ONE SIZE

Circumference (inches)

22-1/2

Height (inches)

4-1/4

1102 CLIP TWO-TONE SNAPBACK CAP.

High profile snapback cap
Adjustable plastic fastener, eyelets, green under-bill lining,
contrast bill and fastener
Mid-weight
80% acrylic 20% wool
One size fits all



Light Grey/Black



Dark Grey/Burgundy



Black/Light Grey



Dark Grey/Black

SIZE	ONE SIZE
------	----------

Circumference (inches)	22-1/2
------------------------	--------

Height (inches)	4-3/4
-----------------	-------



1105 FRACK SNAPBACK CAP.

High profile snapback cap
Adjustable plastic fastener, eyelets, tonal under-bill lining,
contrast bill and fastener
Mid-weight
80% acrylic 20% wool
One size fits all



Natural Heather/Black



Athletic Heather/Black



Burgundy/Athletic Heather



Army/Black

SIZE	ONE SIZE
------	----------

Circumference (inches)	22-1/2
------------------------	--------

Height (inches)	4-1/2
-----------------	-------





1108 TRUCKER CAP.

Lower-profile snapback cap
 Adjustable plastic fastener, tonal under-bill lining, mesh back
 Mid-weight
 100% cotton front and bill, 100% polyester mesh back
 One size fits all



Black

SIZE	ONE SIZE
Circumference (inches)	22-1/2
Height (inches)	4-1/4



1103 FINN FIVE PANEL CAP.

Low profile five panel cap
 Adjustable plastic fastener, metal side eyelets
 Mid-weight
 100% cotton
 One size fits all



Khaki



Burgundy



Navy



Black

SIZE	ONE SIZE
Circumference (inches)	23-3/4
Height (inches)	4-1/4



Khaki



Army



Navy



Black

1104 BUCKET HAT.

Bucket hat
Reinforced brim with stitching detail, side eyelets
Light-Mid weight
100% cotton rip-stop
One size fits all

SIZE	ONE SIZE
Circumference (inches)	24
Height (inches)	3-1/2



1001 CARRIE BAG.

Tote
Reinforced shoulder straps, one large main compartment
Mid-weight, 9.4 oz/yd²
100% cotton canvas
One size 16-1/2" x 16-1/2"



Cream



Black



Black

1003 DUFFEL BAG.

Cylinder duffel

One large main compartment, one external zippered compartment, reinforced adjustable shoulder strap and handles

Mid-weight, 11.8 oz/yd²

100% polyester

One size 11-3/4" x 23-1/4", 13.2 gallons



OUR COLOURS.

Our range has more than 50 colours and is ever expanding. The colour chart below provides approximate examples of the colours; we also provide equivalent Pantone colour names (Pantone Matching System®, PMS colours) for your reference.

Some colours can't be accurately reproduced because of the unique characteristics of certain fabrics; when possible, please refer to an actual garment.

SOLIDS.

							
White	Cream 7506 C 15%	Natural 7506 C 50%	Lemon Yellow 0131 C	Canary Yellow 106 C	Gold 1365 C	Orange 1575 C	Ojay Bright Orange C
							
Pink 217 C	Candy Pink 203 C	Fuchsia 213 C	Watermelon 178 C	Red 185 C	Brick 7419 C	Burgundy 7643 C	Dark Chocolate 4625 C
							
Powder Blue 656 C	Sky Blue 2707 C	Light Blue 2708 C	Carolina Blue 278 C	Arctic Blue 2925 C	Bright Royal 7685 C	Navy 2965 C	Purple 7678 C
							
Aqua 573 C	Mint 566 C	Teal 7465 C	Kelly Green 7731 C	Fern Green 575 C	Army 5763 C	Olive 7530 C	Khaki 7521 C
							
Oyster 7537 C	Light Grey 427 C	Steel 422 C	Dark Grey 424 C	Charcoal 425 C	Coal 7540 C	Black Black 6 C	

HEATHERS.







							
Oatmeal Heather	Natural Heather	Light Grey Heather	Athletic Heather	Steel Heather	Asphalt Heather	Black Heather	Forest Heather
							
Hibiscus Heather	Burgundy Heather	Light Blue Heather	Arctic Heather	Ocean Heather	Navy Heather		

OUR FABRICS.

Our unique production process involves not only cut and sew but also the manufacture of textile yarn, meaning that our suppliers are not buying fabric off the market.

Although this lengthens our production timeline it is essential to ensure consistent high quality output for our customers.


FABRIC KEY.


 Lightweight	 100% Cotton	 Premium	 Water Resistant
 Mid-Weight	 Blended	 Durable	 Sheer
 Heavyweight	 Organic	 Stretch	

T-SHIRTS / TANKS.



COTTON COMBED
100% cotton
Weights (oz/yd²): 4.4, 5.3, 6.5
Thread count (singles): 20, 22, 26, 28, 30, 34
Details: Fine weave, long fibres, ideal for printing



ORGANIC COTTON COMBED
100% cotton
Weights (oz/yd²): 4.4, 34-singles
Details: An eco-friendly organic cotton grown without the use of herbicides or pesticides




COTTON CARDED
100% cotton
Weights (oz/yd²): 5.9, 20-singles
Details: Fine top layer of the cotton is not shaved off, made from shorter fibres



COTTON/POLY BLEND
65% cotton, 35% polyester
Weights (oz/yd²): 4.4, 34-singles
Details: Blend of cotton and polyester fibres provides a heathered look



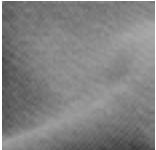
COTTON NATURE YARN
100% cotton
Weights (oz/yd²): 4.7, 28-singles
Details: Mottled look created from three different colours of yarn knitted together





COTTON RIB
100% cotton
Weights (oz/yd²): 5.6, 30-singles
Details: Superfine 1x1 gauge rib



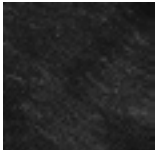
MODAL
100% modal
Weights (oz/yd²): 4.1, 30-singles
Details: Beech tree bark spun into a sheer yarn






MODAL/COTTON BLEND
50% modal, 50% cotton
Weights (oz/yd²): 4.1, 30-singles
Details: Modal blend with a soft feel



VISCOSE/LINEN BLEND
85% viscose, 15% linen
Weights (oz/yd²): 3.8, 30-singles
Details: Breathable, silky finish

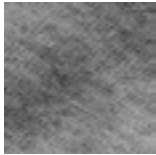
SHIRTS.



COTTON OXFORD
100% cotton
Weights (oz/yd²): 4.7
Details: Plain woven cotton, tight gauge, durable

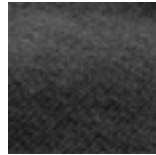
  

SWEATSHIRTS.



COTTON/POLY FLEECE

7.7 oz/yd² is 65% cotton, 35% polyester
10.3 oz/yd² is 80% cotton, 20% polyester
Weights (oz/yd²): 7.7, 10.3
Details: Anti-pill fleece

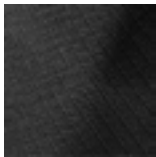


COTTON/POLY FRENCH TERRY FLEECE

75% cotton, 25% polyester (non-heathers 100% cotton)
Weights (oz/yd²): 7.7, 9.4
Details: Anti-pill loopback fleece



JACKETS.

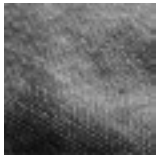


POLYESTER RIP-STOP

100% polyester
Weights (oz/yd²): 2.7
Details: Rip-stop structure, water resistant

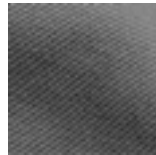


PANTS / SHORTS.



COTTON

100% cotton
Weights (oz/yd²): 4.1 (peached)
Details: Cotton poplin



COTTON/SPANDEX DRILL

96% cotton, 4% spandex
Weights (oz/yd²): 7.4
Details: Small amount of stretch, smooth finish

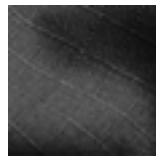


CAPS / HATS.



COTTON

100% cotton
Details: Drill weave, smooth finish, combined with a polyester mesh back on our Trucker caps



COTTON RIP-STOP

100% cotton
Details: Rip-stop structure, durable

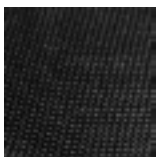


ACRYLIC/WOOL BLEND

80% acrylic, 20% wool
Details: Drill weave, brushed finish



BAGS.



POLYESTER

100% polyester
Weights (oz/yd²): 11.8
Details: Water resistant, heavy 600D



COTTON CANVAS

100% cotton
Weights (oz/yd²): 9.4
Details: Plain weave, durable



PRINTABILITY. _____

The type of fabric you choose for your garment is not only important for the feel and look, it can make a big difference to the way it screenprints too. AS Colour specializes in fine combed cotton fabrics, which are designed specifically to screenprint better than basic carded or uncombed cotton. Combed cotton has more of the fibre removed in the knitting process, which means printing inks sit much more cleanly on the face of the shirt after printing.

A better fabric can mean the difference between an average screenprint and a great one. Combed cotton is also much better for new techniques like direct to garment (DTG) inkjet printing. Producing combed cotton garments is a more involved process and does cost more, but AS Colour is all about providing the very best blank canvases for you to print your ideas on.



LITTLE HELP PROJECT. _____



The Little Help Project is an annual t-shirt design competition for emerging creatives. Now running for six years, the project began as a way to give artists the means to get their designs to print - and what better platform for your work than a t-shirt.

Artists submit designs, the AS Colour team chooses the finalists which are printed and sold for the contest period. Each of the finalists profit handsomely for their designs, and the overall winner also takes home a large cash prize.

The competition is open to everyone and is free to enter. Each artist that is chosen as a finalist receives \$5 NZD for each t-shirt printed. The winner of the Little Help Project will additionally receive a grand prize of \$5,000 NZD.

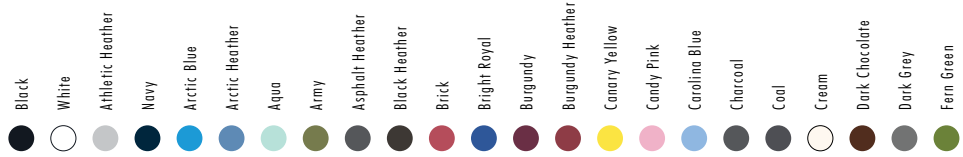
COLLAB T-SHIRT SERIES. _____

The Little Help Project Collab series is an extension of our annual t-shirt design contest, featuring prints from established names in the design world along with previous Little Help Project finalists. Look out for a mix of old favorites and fresh talent including some international names.

Our goal is to assemble an elite crew of amazing designers who will constantly be adding in fresh work. All designers receive royalties for each t-shirt printed.



INDEX .



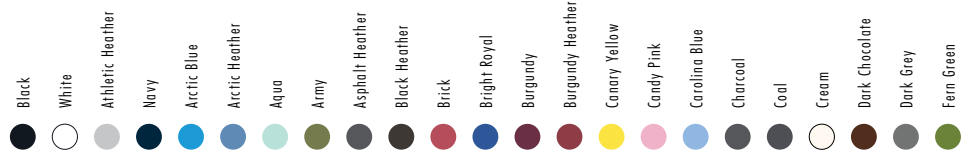
Pg. MEN.

8	5001 STAPLE TEE	●	○	●	●	●	●	●			●	●				●	●				●		
11	5002 PAPER TEE	●	○	●	●						●	●			●			●	●		●		●
14	5003 TARMAC V-NECK TEE	●	○	●																			
12	5005 ORGANIC TEE	●	○	●																			
12	5006 MARBLE TEE							●															
17	5007 LOWDOWN TANK	●	○	●				●											●				
18	5009 INK LONGSLEEVE TEE	●	○	●															●				
9	5010 STAPLE POCKET TEE	●	○	●																			
15	5011 SHADOW TEE	●	○	●				●							●				●				
18	5012 RAGLAN TEE	●	○	●	●	●									●								
10	5013 TALL TEE	●	○	●				●							●								
16	5021 TYPO TANK	●	○	●																			
14	5024 WIRE STRIPE TEE	●	○	●																			
16	5025 BARNARD SLEEVELESS TEE	●	○	●															●				
13	5026 CLASSIC TEE	●	○	●											●								
9	5028 STAPLE STRIPE TEE	●	○	●	●																		
19	5029 BASE LONGSLEEVE TEE	●	○	●																			
25	5102 STENCIL HOOD	●		●				●															
23	5104 BOX CREW	●		●				●															
22	5106 BRUSH CREW	●		●				●															
27	5107 TRACTION ZIP HOOD	●		●				●															
24	5202 CHALK HOOD	●		●				●															
26	5204 INDEX ZIP HOOD	●		●				●															
21	5401 OXFORD SHIRT	●	○																				
20	5402 CHAD POLO	●	○	●																			
27	5501 CYRUS WINDBREAKER	●																					
28	5901 STANDARD PANT	●		●				●															
29	5902 PLAIN SHORT	●		●				●															
28	5904 TRACK PANT	●		●				●															
29	5905 TRACK SHORT							●															

WOMEN.

30	4002 WAFER TEE	●	○	●	●			●			●			●	●			●			●	●	
37	4007 DASH RACERBACK TANK	●	○	●																			
31	4008 MALI TEE	●	○	●				●						●					●				
33	4010 BEVEL V-NECK TEE	●	○	●																			

INDEX.



Pg. WOMEN CONTD.






























32	4011 SHUTTER TEE	Black	White	Athletic Heather	Navy																																			
40	4016 SLOUCH CREW			Athletic Heather				Asphalt Heather						Burgundy																										
39	4017 STELLA LONGSLEEVE TEE	Black	White	Athletic Heather	Navy																																			
32	4019 NOTE TEE	Black	White											Burgundy																										
36	4021 EVEN RIB TANK	Black	White	Athletic Heather																																				
35	4023 LOOP STRIPE TEE		White																																					
34	4024 BASIC TEE	Black	White																																					
34	4025 BASIC STRIPE TEE	Black			Navy																																			
38	4026 FINE LONGSLEEVE TEE	Black	White																																					
38	4027 FINE STRIPE LONGSLEEVE TEE	Black			Navy																																			
45	4029 MADISON PANT	Black																																						
45	4030 MADISON SHORT	Black																																						
37	4040 TULIP TANK	Black	White	Athletic Heather				Asphalt Heather																																
36	5025 BARNARD SLEEVELESS TEE	Black	White	Athletic Heather	Navy																																			
42	5102 STENCIL HOOD	Black		Athletic Heather	Navy			Asphalt Heather																																
41	5104 BOX CREW	Black		Athletic Heather	Navy			Asphalt Heather																																
41	5106 BRUSH CREW	Black		Athletic Heather				Asphalt Heather																																
44	5107 TRACTION ZIP HOOD	Black						Asphalt Heather																																
43	5202 CHALK HOOD	Black		Athletic Heather	Navy																																			
43	5204 INDEX ZIP HOOD	Black		Athletic Heather	Navy			Asphalt Heather																																

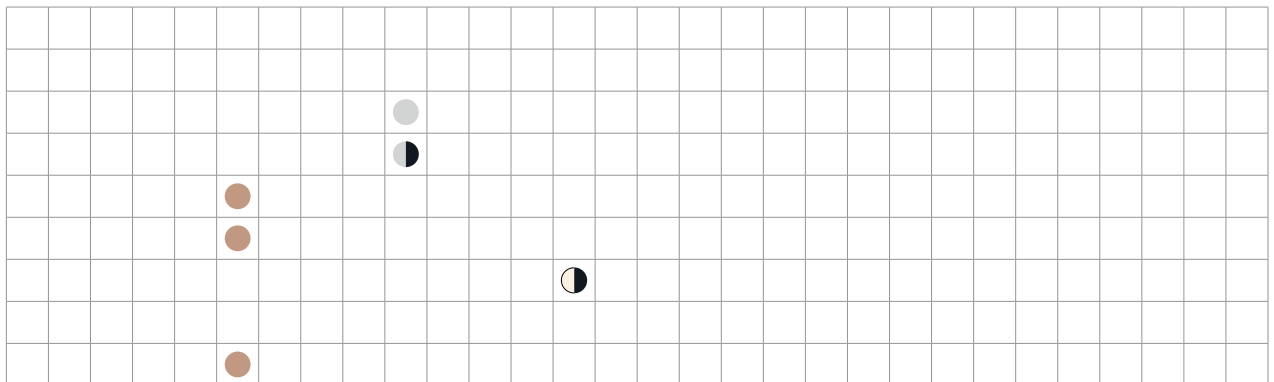
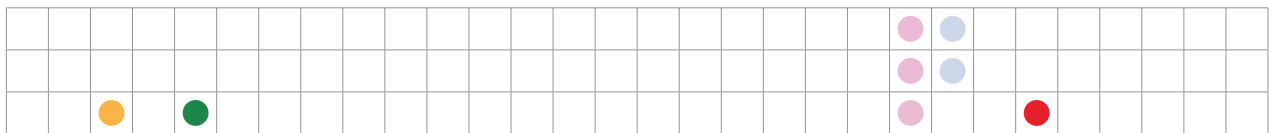
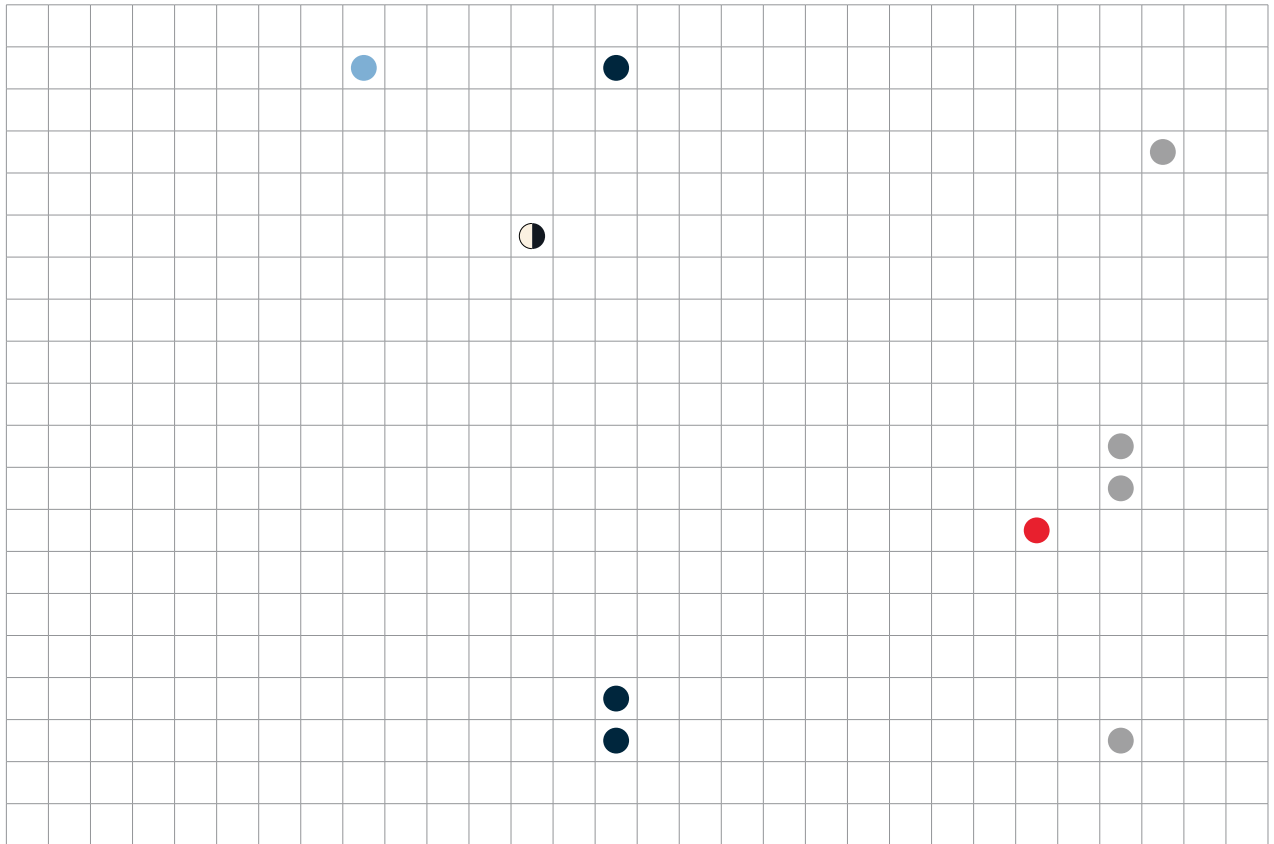
KIDS/YOUTH.

46	3001 INFANT WEE TEE	Black	White	Athletic Heather																																				
46	3003 INFANT MINI-ME ONE PIECE	Black	White	Athletic Heather																																				
47	3005/3006 KIDS/YOUTH TEE	Black	White	Athletic Heather	Navy							Bright Royal													Carolina Blue	Charcoal														

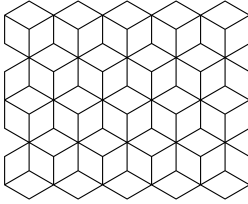
ACCESSORIES.

52	1001 CARRIE BAG	Black																																				White
53	1003 DUFFEL BAG	Black																																				
48	1101 TRIM SNAPBACK CAP	Black			Navy			Army						Burgundy																								Dark Grey
49	1102 CLIP TWO-TONE SNAPBACK CAP	Black	White											Burgundy																								Black
50	1103 FINN FIVE PANEL CAP	Black			Navy									Burgundy																								
51	1104 BUCKET HAT	Black			Navy			Army																														
49	1105 FRACK SNAPBACK CAP			Black				Army						Burgundy																								
50	1108 TRUCKER CAP	Black																																				
48	1109 BILLY CAP	Black			Navy			Army																														Dark Grey

- Forest Heather 
- Fuchsia 
- Gold 
- Hibiscus Heather 
- Kelly Green 
- Khaki 
- Lemon 
- Light Blue 
- Light Blue Heather 
- Light Grey 
- Light Grey Heather 
- Mint 
- Natural 
- Natural Heather 
- Navy Heather 
- Oatmeal Heather 
- Ocean Heather 
- Olive 
- Orange 
- Oyster 
- Pink 
- Powder Blue 
- Purple 
- Red 
- Sky Blue 
- Steel 
- Steel Heather 
- Teal 
- Watermelon 



as
colour



quality basics